



VAAGEN
TIMBERS

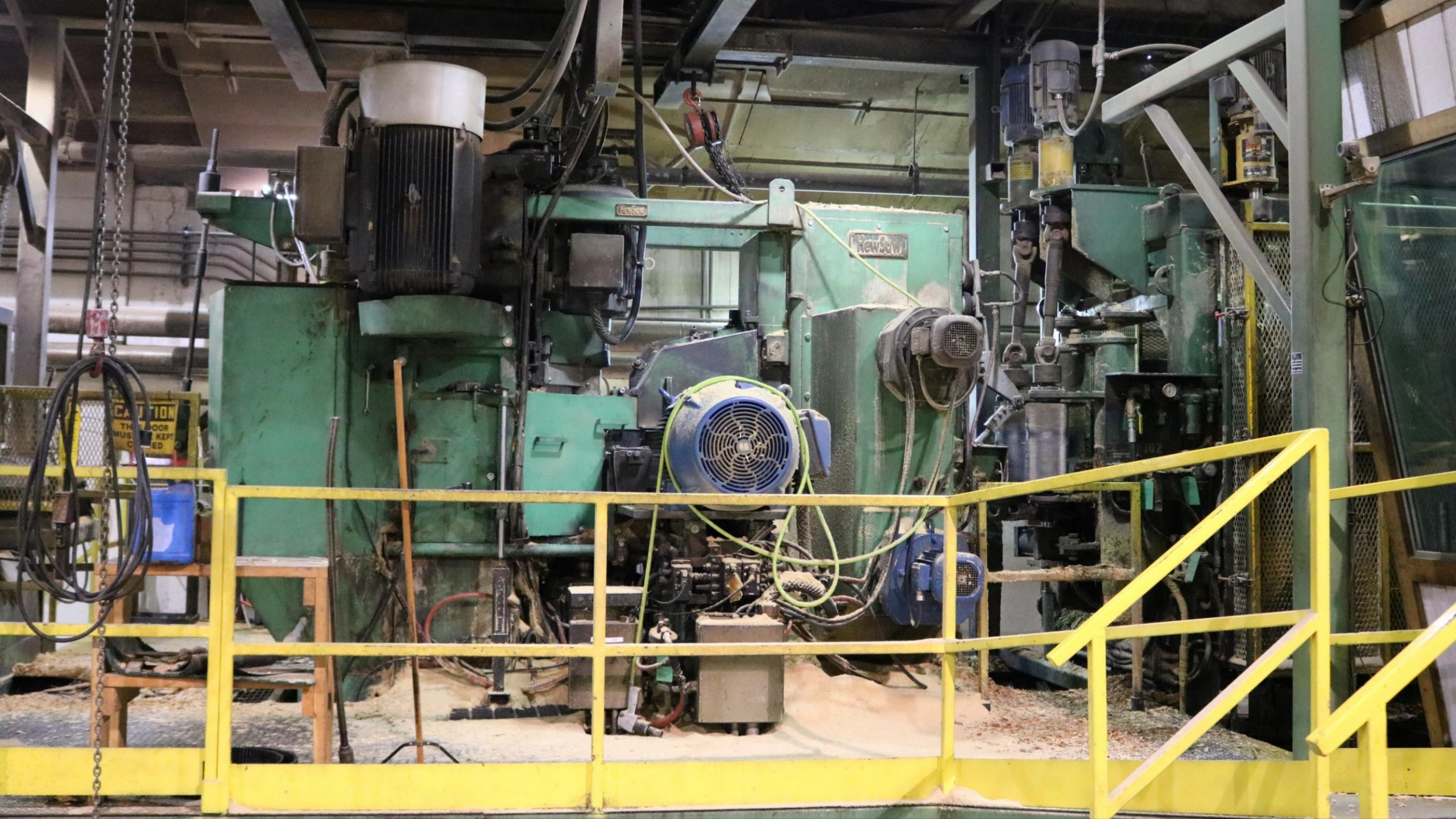
Mass Timber and the Environment

Russ Vaagen

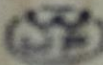




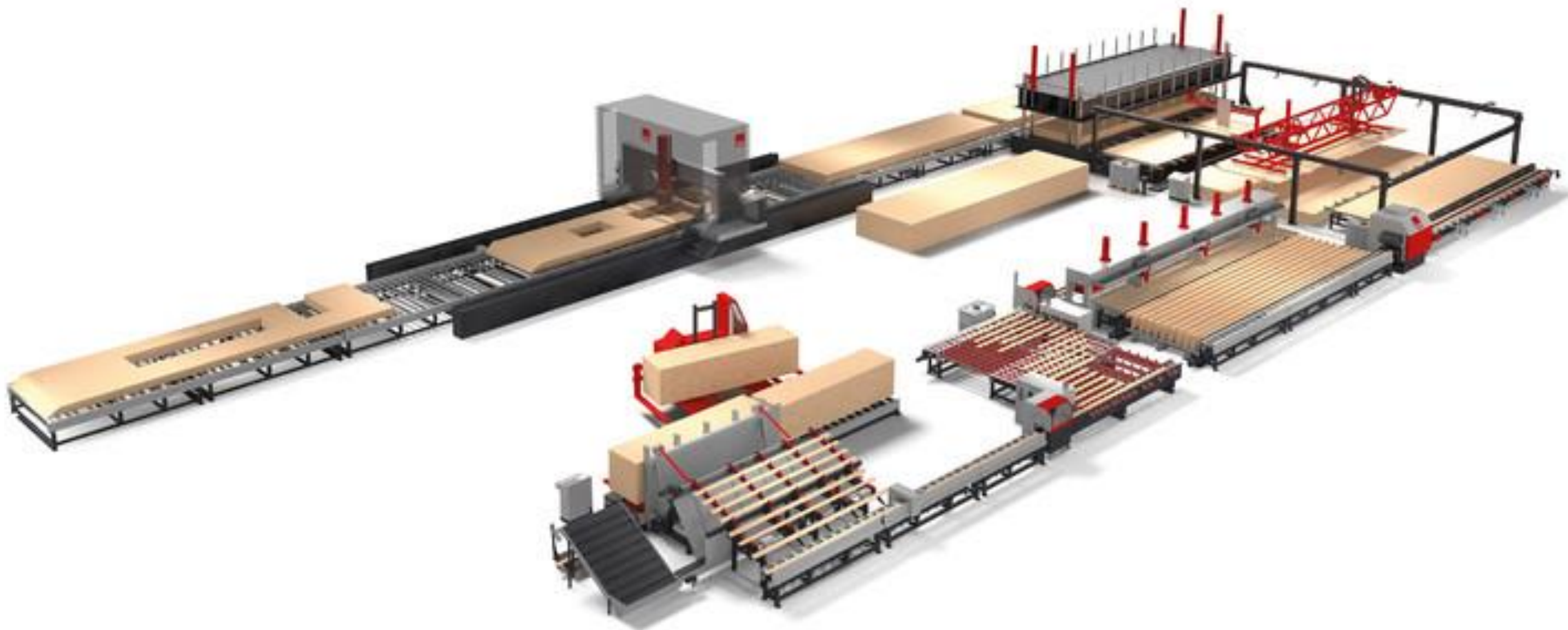




VAGEN BROS.
MACHINE RATED

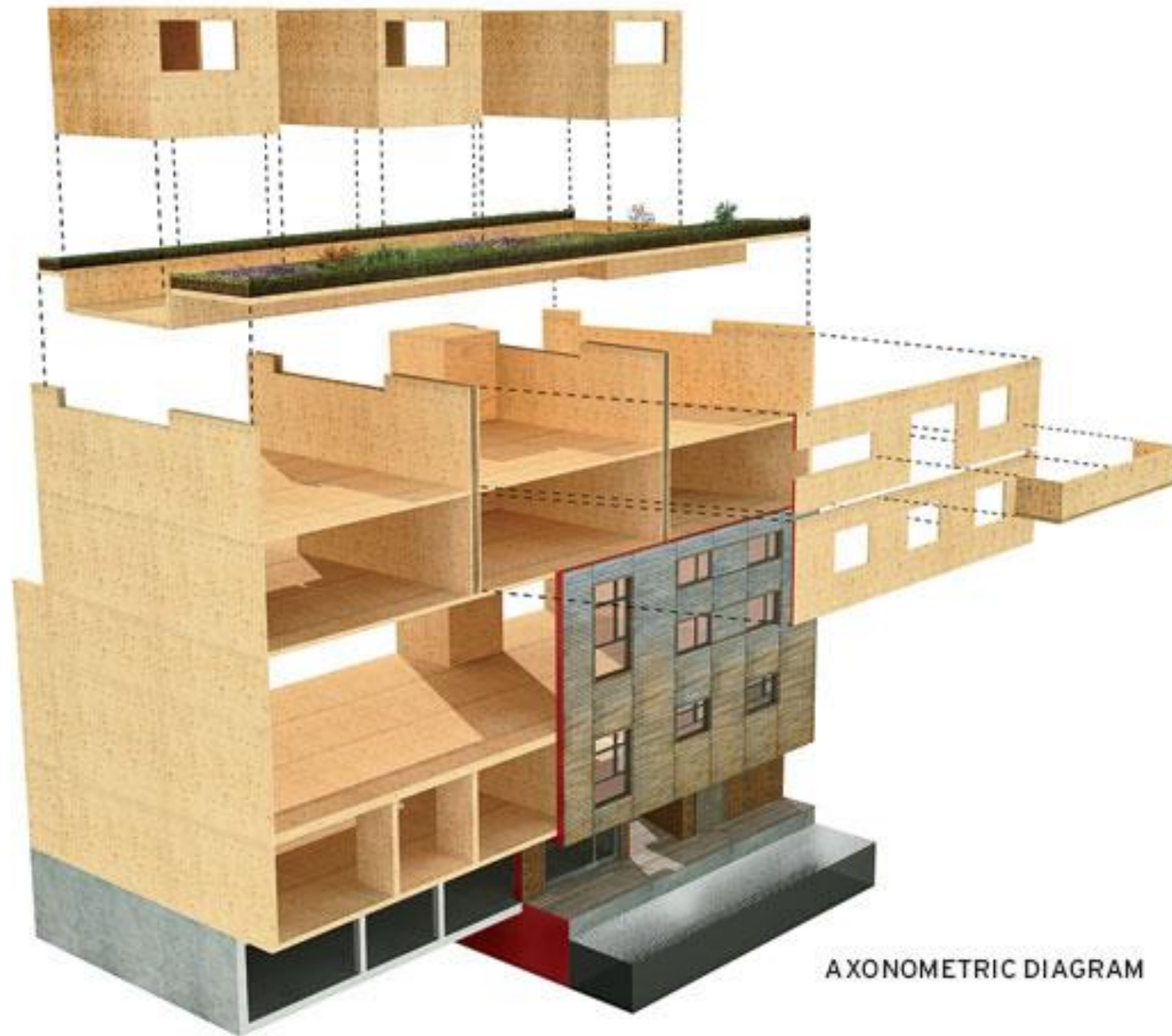
 343 KDHT SPF

210076 157076 1 SE 4756









AXONOMETRIC DIAGRAM

KLH Massivholz Ges.m.b.H.

Katsch 202 8842 Katsch/Mur

23.02.17

WPPA



RP-094-03s-DQ - NSI-NSI

Plattencd.: 1000211809

Zuschnittcd.: 1000211776

Projektnr.: 007771

Kunde: KLH UK Ltd.

BVH: Hoxton-55 Pitfield Street del. 9-11

Lieferung: 10

Element:

W-907





5TH FLOOR















www.theforestblog.com

Forests
Wildfire
Collaboration